



## Upper Valley Lake Sunapee Regional Planning Commission

**Date:** April 21<sup>st</sup>, 2021

**To:** UVLSRPC Transportation Advisory Committee (TAC)

**From:** Alex Belenz, Planner

**Re:** Preliminary UVLSRPC Staff Recommendation for Regional Transportation Alternatives Program (TAP) Project Rankings

### **Background**

TAP is a federal aid program, administered by NHDOT, that reimburses municipalities for non-motorized transportation infrastructure improvements. Municipalities apply directly to NHDOT for TAP funding, with project awardees eligible to be reimbursed for up to 80% of project costs (federal aid is capped at \$1,000,000). Project awards are recommended by a NHDOT committee with input from Regional Planning Commissions. Final project awards are approved by the NHDOT Commissioner. For more information, visit:

<https://www.nh.gov/dot/org/projectdevelopment/planning/tap/>.

For the purposes of providing input to NHDOT, Regional Planning Commissions are asked to submit rankings of projects proposed within their respective regions.

### **UVLSRPC Region Proposals**

TAP proposals were submitted by the City of Claremont and the Town of Newport. A brief summary of each proposal is provided below.

#### *City of Claremont*

This proposal consists of several project components aimed at improving pedestrian and bicycle access and upgrading existing non-motorized infrastructure between Stevens High School, Monadnock Park, and the Bobby Woodman Trail:

- Replace sidewalk in poor condition with 1,400 linear foot multi-use path along Broad St between Stevens High School and the Bobby Woodman Trail.
- Construct new 1,950 linear foot pedestrian path through Monadnock Park from Broad St entrance to Chesnut St entrance, including upgraded pedestrian crossing across Broad St (curb bump-outs and Rectangular Rapid Flashing Beacons).
- Resurface 2,300 linear feet of the Bobby Woodman Trail from Chesnut St to the Sugar River bridge.
- Total project cost: \$828,841.16 (requesting \$663,072.93 in federal aid)
- Map: *see Attachment A*
- Download full application:

[https://www.uvlsrpc.org/index.php/download\\_file/view/2065/272/](https://www.uvlsrpc.org/index.php/download_file/view/2065/272/)



## Upper Valley Lake Sunapee Regional Planning Commission

### Town of Newport

The Town of Newport proposes to reconstruct 2,800 linear feet of sidewalk in poor condition along NH Route 11/Sunapee St starting at Main St and extending slightly past Sargent Ln. The current sidewalk has lost grade separation with the roadway in some places and is badly degraded. The new sidewalk will be constructed with appropriate grade separation, granite curbing, improved drainage, and a landscaped edge. The project area is adjacent to the Richards Elementary School, though does not directly connect to the school.

- Total project cost: \$718,000.00 (requesting \$574,400.00 in federal aid).
- Map: *See Attachment B*
- Download full application:  
[https://www.uvlsrpc.org/index.php/download\\_file/view/2066/272/](https://www.uvlsrpc.org/index.php/download_file/view/2066/272/)

### **Initial UVLSRPC Staff Rankings**

<b>Prelim. Rank</b>	<b>Project Location and Description</b>	<b>Score (out of 10)</b>
<b>1</b>	Claremont – Improve pedestrian and bicycle access and upgrading existing non-motorized infrastructure between Stevens High School, Monadnock Park, and the Bobby Woodman Trail.	6.08
<b>2</b>	Newport – Reconstruct 2800 linear foot sidewalk along NH 11/Sunapee St.	5.55

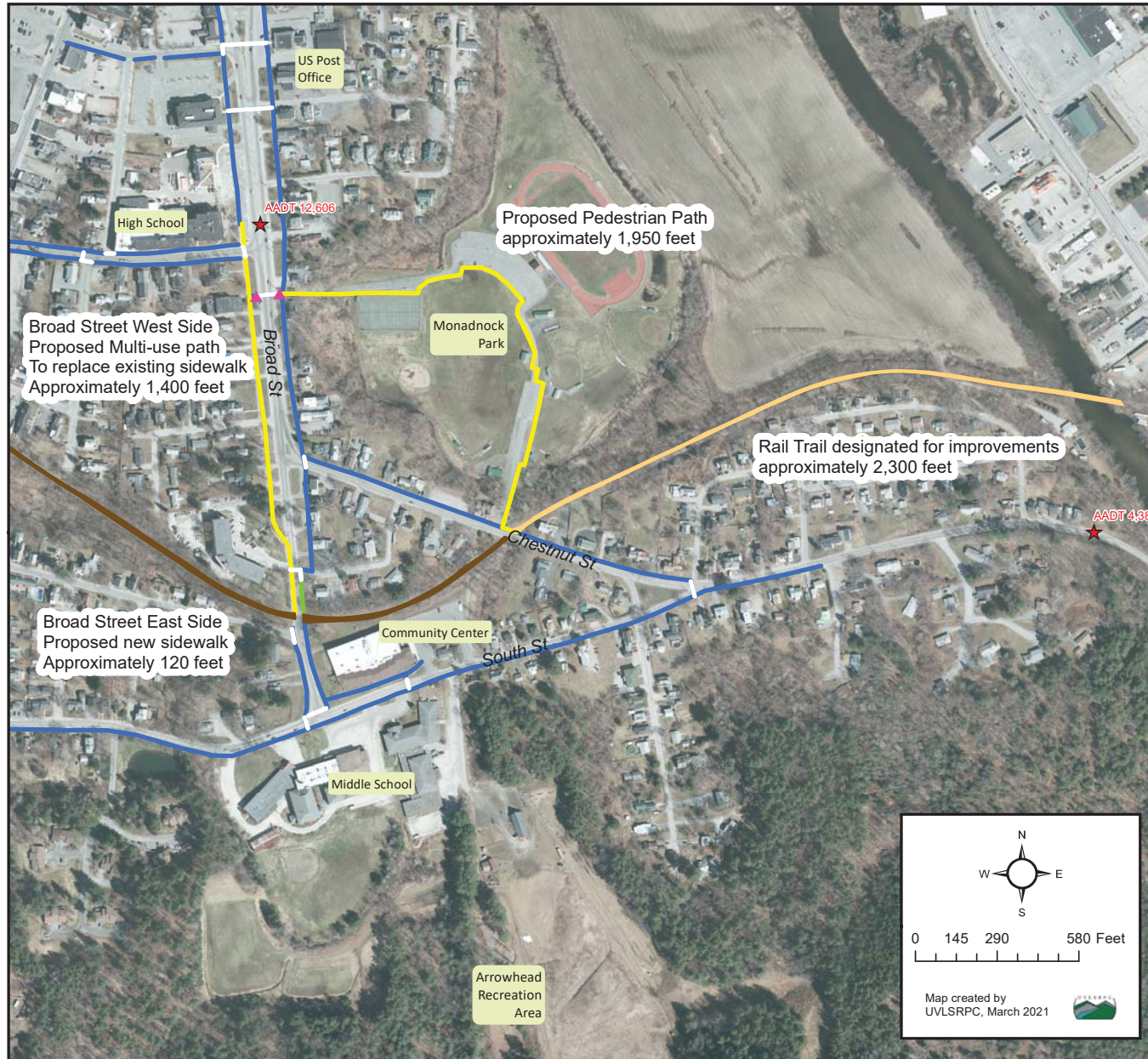
Project scores are developed using the same set of metrics the UVLSRPC TAC used in 2018 to rank TAP projects. These metrics are based on criteria that NHDOT will use to evaluate project proposals. See Attachment C for a full breakdown of project scoring.

Overall, UVLSRPC staff note that both projects are worthy of TAP funding.

### **TAC Request for April 27<sup>th</sup>, 2021 Meeting**

The TAC is requested to review and discuss these preliminary rankings and either approve the rankings as-is or propose changes.

# ATTACHMENT A



## City of Claremont Transportation Alternative Program Grant 2021

- Proposed Multi-Use or Pedestrian Path
- Rail Trail**
  - Improvements
  - Existing
- Sidewalks along Primary Roads**
  - Proposed
  - Existing
- Crosswalks**
  - Proposed bump outs & RRFBs
  - Crosswalk
  - Annual Average Daily Traffic (2019)

Data Sources:

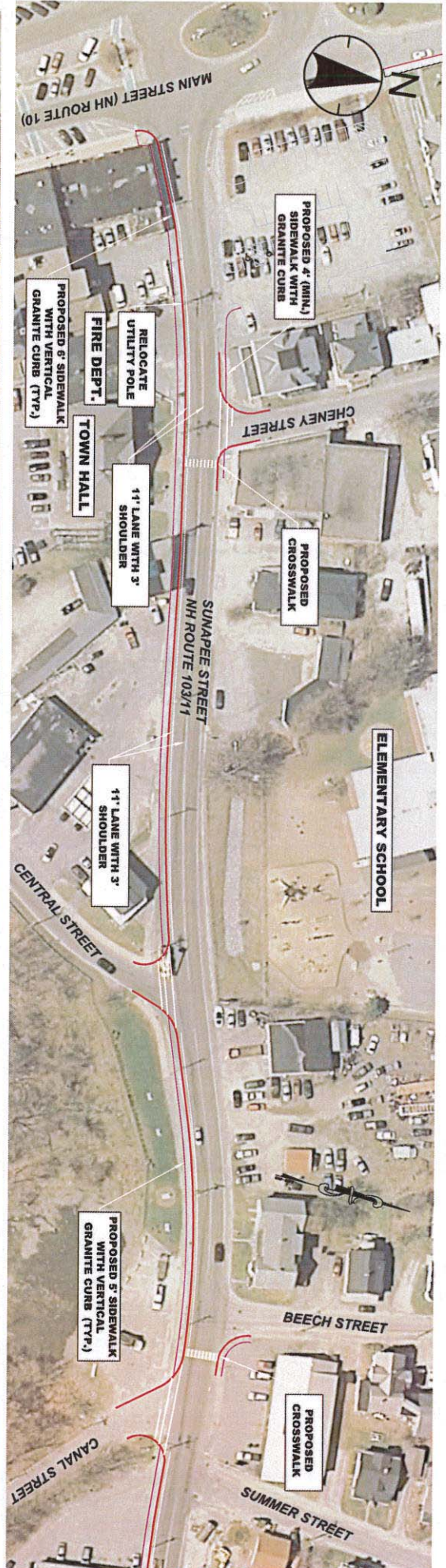
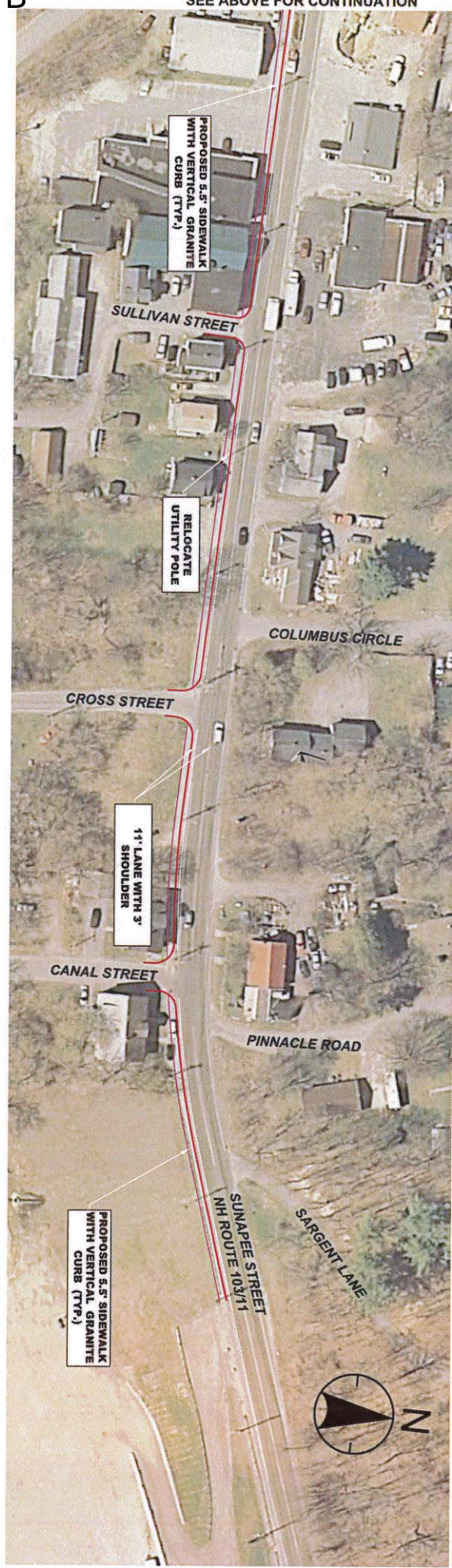
Imagery (2014), Sidewalks, Crosswalk, and Rail Trail (2021)  
details provided by the City of Claremont.  
Traffic Volume provided by the NH Department of Transportation (2019)



SEE ABOVE FOR CONTINUATION

**KVP**  
**Partners LLC**  
P.O. Box 432  
New Boston, NH 06070  
(603) 415-6650

**SIDEWALK PROJECT - TAP APPLICATION**  
**NEWPORT, NEW HAMPSHIRE**



SEE BELOW FOR CONTINUATION



# ATTACHMENT C

UVLSRPC Staff - Draft TAP Application Recommendations

For Consideration by the UVLSRPC Transportation Advisory Committee April 27, 2021

		Claremont		Newport	
		Points	Score	Points	Score
<b>Potential for Success (37%)</b>					
Financial Readiness (40%)			1.18		1.18
	Funding Will be Considered at Town Meeting (5 points)	-		-	
	Written Council/Selectboard Funding Commitment (8 points)	8		8	
	Funding Already Appropriated or in Reserve (10 points)	-		-	
	<b>Financial Readiness Subtotal</b>	<b>8</b>		<b>8</b>	
Project Readiness and Support (30%)			0.89		0.89
	Local/Regional Master Plan or Transportation Plan (4 points)	3		3	
	Council/Selectboard/Other Local Board Support (3 points)	3		3	
	Conceptual/Preliminary Design Completed (2 points)	1		1	
	Advocacy Group Support (1 point)	1		1	
	<b>Project Readiness and Support Subtotal</b>	<b>8</b>		<b>8</b>	
Feasibility (30%)			0.00		0.00
	No Environment Concerns (e.g. wetlands) (4 points)	4		4	
	No Historic/Cultural Concerns (2 points)	2		2	
	No Construction Concerns (e.g. ledge, topography) (3 points)	3		3	
	No Right-of-Way Concerns (2 points)	2		2	
	<b>Feasibility Subtotal</b>	<b>11</b>		<b>11</b>	
<b>Safety (22%)</b>					
Improve Safety (60%)			0.66		0.66
	Correct Dangerous Situation (2 Points)	2		2	
	Crossing Improvements (1 Point)	1		1	
	Striped Bicycle Lane (1 Point)	-		-	
	Sidewalk (Upgrade) (1 Point)	1		1	
	New Sidewalk (New) (2 Points)	-		1	
	Multi-Use Path (Upgrade) (1 Point)	1		-	
	Multi-Use Path (New) (2 Points)	-		-	
	<b>Improve Safety Subtotal</b>	<b>5</b>		<b>5</b>	
Stress Analysis (40%)			0.70		0.62
	Bicycles separated from cars (3 points)	3		-	
	Pedestrians separated from cars (4 points)	4		4	
	Safety/Security (remoteness, street lights, etc) (2 points)	1		2	
	Bicycles separated from pedestrians (1 points)	-		1	
	<b>Stress Analysis Subtotal</b>	<b>8</b>		<b>7</b>	
Project Connectivity (18%)			1.08		0.90
	Extends network to residential neighborhood (2 points)	1		1	
	Extends network to commercial/employment destination (2 points)	1		1	
	Extends network to recreational destination (2 points)	2		1	
	Extends network to public or community facility (2 points)	1		1	
	Fills a gap in the existing network (2 points)	1		1	
	<b>Project Connectivity Subtotal</b>	<b>6</b>		<b>5</b>	

Socioeconomic Benefits (12%)					
Equity (60%)			0.58		0.43
	Benefits to Children (schools, playgrounds) (3 points)	3		2	
	Benefits to Elderly (housing, sr.center) (3 points)	1		1	
	Benefits to Underserved Communities/Public Health (4 points)	4		3	
	Equity Subtotal	8		6	
Economic/Tourism Benefit (40%)			0.29		0.29
	Provides access to workplaces (4 points)	3		3	
	Provides access to services (4 points)	3		3	
	Provides access to vistas/tourism sites (2 points)	-		-	
	Economic/Tourism Subtotal	6		6	
RPC Ranking (TAC Discretionary) (6%)			0.60		0.48
First=10, Second =8, Third=6, Fourth=4, Fifth=2		10		8	
RPC Ranking Subtotal		10		8	
Multi-Modal Connections (5%)			0.10		0.10
Park-and-ride Lot (3 points)		-		-	
Bus stop(s) (4 points)		2		2	
Airport (2 points)		-		-	
Train Station (2 points)		-		-	
Multi-modal Connections Subtotal		2		2	
Final Score			6.08		5.55